

MAKITA continued

Part # FF202

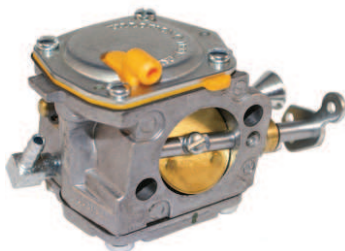
- Fuel Filter
- For DPC6200, 6201, 6400, 6401, 6411, 7300, 7301, 7310, 7311



PARTNER

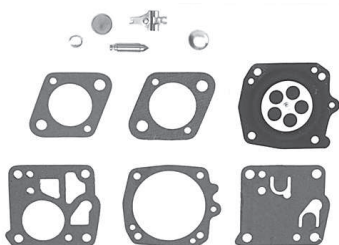
Part # 155175

- Carburetor
 - Fits models K650/700/800/1200
- Replaces **Partner 506-32-15-03**



Part # 48031

- Carburetor Kit
 - Fits models K650 Active, K700
- Replaces **Partner 506-23-63-01**



Part # P44184

- Crankshaft
 - Fits K650 and K700
- Replaces **Partner 503 15 80-01**



Part # 155425

- Cylinder Assembly
 - Fits K1250
- Replaces **Partner 506 2942 71**



Part # 155465

- Cylinder Assembly
 - Fits models K650 and 700 Active I, II, III
 - Cylinders come complete with piston, rings, pins and clips
- Replaces **Partner 506 09 92-12**



PARTNER continued

Part # P44265

- Cylinder Assembly
 - Fits models K950
 - 56mm bore
 - Cylinders complete with piston, rings, pin and clips
 - Not compatible and warranty void with equipment using greater than 10% ethanol-blend fuel
- Replaces **Partner 506 15 55-06**



Part # 44963

- Decompression Valve
 - Fits models K650 Active, K700
- Replaces **Partner 503-71-53-01**



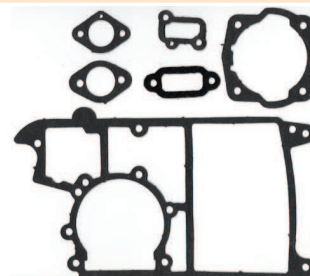
Part # FF202

- Fuel Filter
 - Complete Filter & Housing
 - Fits models K650 Active, K700
- Replaces **Partner 506-26-41-11**



Part # P44239

- Gasket Set
 - Fits K650 and K700
 - Active II & Active III models
 - Contains base, head, (3) carb and exhaust
- Replaces **Partner 5063488-01**



Part # RS750

- Starter Recoil
 - Fits K750 cutoff saw
- Replaces **Husqvarna/Partner 506-26-41-11, 506 3856 12**



Part # P44250

- Piston Assembly
 - Fits K650 and K700
 - Active II and Active III models
- Replaces **Partner 506 09 90-01**



Part # P44251

- Piston rings (2)
 - Fits K650 and K700
 - Active II and Active III models
- Replaces **Partner 503 28 90-17**



PARTNER continued

Part # P44080

- Piston Assembly
 - Fits Partner and Husqvarna saw model K750
- Replaces **Partner 506 37 24-01**



Part # P44953

- Piston Assembly
 - Fits K950 saw models
- Replaces **Partner 506 15 56-02**



STIHL

Part # BN30

- Bar Nut
 - Fits models 015-056 series
 - 8mm x 1.25 THD
- Replaces **Stihl 9220-260-1100**



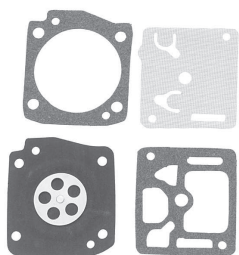
Part # P44926

- Bearing Set
 - Fits TS400
- Replaces **Stihl 9503 003 0341, 9503 003 0450**



Part # 48031

- Carburetor Kit
 - Fits model TS400
- Replaces **Stihl 1124-007-1060**



Part # P44998

- Crankshaft
 - Fits TS400
- Replaces **Stihl 4223 030 0400**



STIHL continued

Part # 155274

- Carburetor
 - Fits model TS400
- Replaces **Stihl 4223-120-0600**



Part # 155276

- Carburetor
 - Fits model TS460
- Replaces **Tillotson HS-276D**



Part # 155284

- Carburetor
 - Fits model TS510/760
- Replaces **Tillotson HS-281D**



Part # 155262

- Carburetor
 - Fits model TS460
- Replaces **Tillotson HS-262**



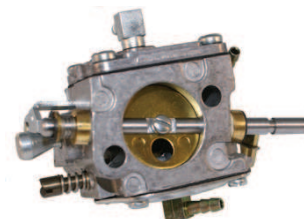
Part # 155292

- Carburetor
 - Fits model TS350
- Replaces **Tillotson HS-292**



Part # 155279

- Carburetor
- Fits model TS400



STIHL continued

Part # 155281

- Carburetor
 - Fits model TS510/760
- Replaces *Tillotson HS-281D*



Part # P44930

- Clutch Shoe
 - Fits TS400
- Replaces *Stihl 1128 160 2004*



Part # 44966

- Cylinder
 - Fits model TS460
- Replaces *Stihl # 4221-020-1201*



Part # SC260

- Cylinder Assembly
- Replaces *Stihl*
NEW!



Part # 155544

- Cylinder Assembly
 - Fits models 044/MS440
- Replaces *Stihl # 1128 020 1227*



Part # 155546

- Cylinder Assembly
 - Fits models 046/MS460
- Replaces *Stihl # 1128 020 1217*



STIHL continued

Part # 155566

- Cylinder Assembly
 - Fits models 066/MS660
- Replaces *Stihl # 1128 020 1211*



Part # 155700

- Cylinder Assembly
 - Fits model TS700, TS800
- Replaces *Stihl 4224-020-1202*
NEW!



Part # 115760

- Cylinder Assembly
 - Fits model TS760
 - Cylinders come complete with piston, rings, pins and clips
- Replaces *Stihl 4205-020-1200*



Part # 155540

- Cylinder Assembly
 - Fits model TS400
 - 49mm bore
 - Cylinders come complete with piston, rings, pin and clips
- Replaces *Stihl 4223-020-120*



Part # AC350

- Cylinder Assembly
 - Fits TS08, TS350, TS350AVE, TS360
 - 47mm bore
 - Cylinders come complete with piston, rings, pins and clips
- Replaces *Stihl 1108-020-1220*



STIHL continued

Part # AC280

- Cylinder Assembly
 - Fits models 028 and 028 Super
 - 46mm bore
 - Cylinders come complete with piston, rings, pins and clips
- Replaces **Stihl 1118-020-1202, 1118-020-1203**



Part # 155360

- Cylinder Assembly
 - Fits models 036 and new style MS360
 - 48mm bore
 - Cylinder complete with piston, rings, pins and clips
 - Does NOT have compression release
 - Not compatible and warranty void with equipment using greater than 10% ethanol-blend fuel
- Replaces **Stihl 1125 020 1213, 1125 020 1215, 1125 020 1216**



Part # 155510

- Cylinder Assembly
 - Fits models 051, TS510 and TS50
 - 52mm bore
 - Cylinders come complete with piston, rings, pins and clips
- Replaces **Stihl 1111-020-1200**



Part # P44935

- Cylinder Assembly
 - Fits Stihl TS410, TS420
- Replaces **Stihl 4238 020 1202**



Part # 44963

- Decompression Valve
 - Fits model TS400, TS460
- Replaces **Stihl 4223-030-2000, 4221-020-9400**



Part # FF202

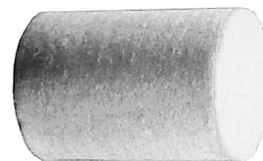
- Fuel Filter
 - Fits models TS08 and TS50
 - 23/32" OD x 1-3/4" L
 - Uses part # FF173 fuel filter element
- Replaces **Stihl 1115-350-3503, 0000-350-3500**



STIHL continued

Part # FF173

- Fuel Filter Element
 - 3/4" OD x 1-3/16" L
 - Filter element for part # 610-170 fuel filter
- Replaces **Stihl 1110-358-1800**



Part # 48181

- Fuel Filter
 - Fits TS700 and TS800
 - 8.5 mm ID fuel line
- Replaces **Stihl**



Part # FF4

- Fuel Filter
 - Fits models TS510 and TS760
 - 23/32" OD x 1-5/8" L
 - Fits 3/16" ID fuel line
 - For 30cc and higher engines
- Replaces **Stihl 0000-350-3502, 0000-350-3520; Zama AF-4**



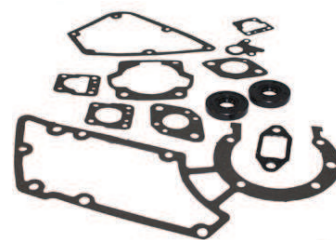
Part # FF5

- Fuel Filter
 - Fits TS350, TS350AVE, TS360, TS400 and TS460
 - 23/32" OD x 1-5/8" L
 - Fits 1/4" ID fuel line
 - For 30 cc and higher engines
- Replaces **Stihl 0000-350-3500; Zama ZF-5**



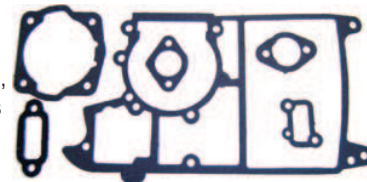
Part # P44084

- Gasket Set
 - Fits TS350/360
 - Contains tank, base, intake, exhaust and oil seals
- Replaces **Stihl**



Part # P44241

- Gasket set
 - Fits TS400
 - Includes fuel tank, carb mounting, crankcase, head, muffler gaskets and oil seals
- Replaces **Stihl 4223 007 1050**



Part # P1003

- Gasket kit
 - Fits TS420
 - Fits P44935 cylinder
- Replaces **Stihl 4238 007 1003**
NEW!

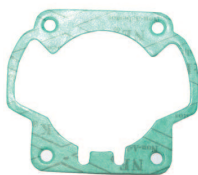


STIHL continued

Part # P44958

- Head Gasket
- Paper gasket
- Fits TS460

Replaces *Stihl* 4221 029 2300



Part # ST42210071060

- Gasket kit
- Fits model TS460

Replaces *Stihl* 4221 007 1050

NEW!

Part # P44934

- Hose Connector
- Fits Stihl TS400

Replaces *Stihl* 4201 700 7300



Part # CS60799

- Ignition Module
- Fits models TS400 Cutquick saws
- 2 hold mounting

Replaces *Stihl* 4223 400 1302,
4223 400 1303



Part # P44169

- Muffler
- Fits TS400

Replaces *Stihl* 4223 140 0601



Part # P44931

- Oil Cap
- Fits TS400

Replaces *Stihl* 0000 350 0525



Part # P44932

- Oil Cap
- Fits TS400

Replaces *Stihl* 0000 350 0526



STIHL continued

Part # 155550

- Piston Assembly
- Fits model TS400
- Fits our part # 155550

Replaces Stihl



Part # P44936

- Piston Assembly
- Fits Stihl TS410 and TS420

Replaces *Stihl* 4238 030 2003



Part # P44937

- Piston Rings
- Fits Stihl TS410, TS420

Replaces *Stihl* 4238 020 1202



Part # P44920

- Starter Handle
- Fits TS400, 029, 034, 036, 039, 044, 046

Replaces *Stihl* 1122 190 3400



Part # SP24

- Starter Handle
- Fits models 024, 028, 031, 041, TS08, TS50, TS510, TS760 cut-off saws

Replaces *Stihl* 1121-195-3400



Part # P44921

- Rope & Handle
- Fits TS400

Replaces *Stihl* 1122 190 3400



STIHL continued

Part # P44928

- Starter Pulley
 - Fits TS400
- Replaces *Stihl* 4223 190 1001



Part # P44922

- Starter Rope
 - Fits TS400
- Replaces *Stihl* 0000 930 2268



Part # P44925

- Starter Spring
 - Fits TS400
- Replaces *Stihl* 422323 190 0600



Part # P13055

- Recoil Spring
 - Fits TS410, TS420 cut off saws
- Replaces *Stihl* 4282-195-0300
NEW!



STIHL continued

Part # 150439

- Recoil Starter Assembly
 - Fits models TS410 and TS420 Cutquick saws
- Replaces *Stihl* 4238 190 0300, 4238 190 0302
NEW!



Part # 155545

- Starter Assembly
 - Fits TS400
 - Includes cover, pulley, dog, rewind, spring cord and handle
- Replaces *Stihl* 4223 190 0401



Part # 57019

- T Handle Wrench
 - Torx #T-27
- Replaces *Stihl* 5910-890-2400



Part # P44924

- Throttle Trigger
 - Fits Stihl TS400
- Replaces *Stihl* 4223 182 1000



BELTS

Part #	OE #	Size	Application
DOLMAR			
44962	965-300-470		Drive belt for PC6412, 6414, 7312, 7314 cut off saw
HUSQVARNA			
95611	506 07 05-20	3/8" x 34-1/2"	Fits 371K cut off saw
MAKITA			
44962	96530470		Fits DPC6200, 6201, 6400, 6401, 6411, 7300, 7310, 7311 cutoff saws
PARTNER			
155465	506 27 67-41		Fits K650 Active cut-off saw
155465-1	506 02 92-01		Fits K650 Active cut-off saw - belt cover
155466	506 37 27-06		Fits K650 MK3 Active cut-off saw
65912	506 07 05-03	3/8" x 34-1/8" L	Fits K950 Active cut-off saw with 12" or 14" blade
95613	506 07 05-04	3/8" x 36-1/2"	Fits K950 Active cut-off saw with 16" blade
PS1250	506 07 05-07	3/8" x 39-5/8"	Fits model K1250 Active cut-off saw
PA750	506 29 67-02	.550" x 32"	Fits model K750 cut-off saw, multi-ribbed
STIHL			
95615	9490-000-7851	3/8" x 34-1/8"	Fits TS400 cut-off saws, Type 3, cogged
ST9490 NEW!	9490 000 7900	7/16" x 31.5"	Drive belt; Fits Stihl model TS420 Cutquick saws
95617	9490-000-7850		Fits TS360 cut-off saws
95614	9490-000-7892		Drive belt fits TS510 cut-off saw
95690	9490-000-7920		Drive belt fits TS700 cut-off saw
95616	94900-000-7895		Drive belt fits TS760 cut-off saw
95691	9490-000-7915		Drive belt fits TS800 cut-off saw

BOBCAT

Part # DP7249

- Blade Spacer
 - 1/2" ID x 1" OD x 1/4" thick
- Replaces Scag



Part # P48207

- Caster Yoke
 - For pneumatic wheel assembly
 - 3-1/2" yoke width
- Replaces **Bobcat 36309, 36250**



Part # P6581

- 4" Yoke
- Replaces **Bobcat 36411, 36526**



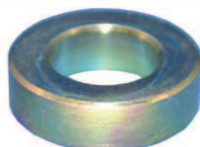
Part # BC6885

- Caster yoke spacer
 - 1" ID x 1-3/4" OD x 1/4" thick
- Replaces **Bobcat 64163-07**



Part # BC6886

- Caster yoke spacer
 - Use on our # P6581 yoke
 - 1" ID x 1-11/16" OD x 1/2" thick
- Replaces **Bobcat 64163-22**



Part # AC1191

- Blade/spindle spacer
 - 1" OD x 5/8" ID x 1/2" thick
- Replaces **Bobcat 64163-12; Bunton PLO617; Exmark 303164; Ferris 154177; J Deere PT8888; Kees 363033; Snapper 7-6436**



Part # BC10757

- Damper assembly
 - Fits Bobcat "Zero Turn" riders
 - Size: 8 x 22
 - Extended length: 10.08"
- Replaces **Bobcat 2721246**



Part # DP8099

- Swivel
 - Control rod linkage swivel
 - 1-1/6" L x 5/16" dia. x 5/16"
- Replaces **Bobcat 33004A**



BOBCAT continued

Part # DP10810

- Swivel
 - Thread Size: 3/8"-18
 - OD (Pin) 5/16"
 - Shoulder Length: 1/2"
- Replaces **Bobcat 33103**



Part # DP7788

- Brake Band
 - For 36", 48", 54", 61" mid-size mowers
 - 3/4" W x 6" dia.
- Replaces **Bobcat 138008**



Part # DP2855

- Quick Pin
 - Fits 36", 48", 52" and 61" walk behinds
 - 2" OD x 7/16" OD of pin x 1-3/4" L
- Replaces **Bobcat 64173-04**



Part # DP2853

- Quick Pin
 - 3/16" OD x 1-1/4" L
- Replaces **Bobcat 64173-02, 64173-05**



BUNTON

Part # P5704

- Blade bolt
 - 5/8" OD x 9" L
- Replaces **Bunton PLO815**



Part # DP7249

- Blade Spacer
 - 1/2" ID x 1" OD x 1/4" thick
- Replaces Scag



DIXIE CHOPPER

Part # P48069

- Caster Yoke
 - Yoke: 5-3/4"
 - Threads: 1"
 - Diameter shaft: 1.060"
- Replaces **Dixie Chopper 97170**



Part # DP11508

- Brake Band
 - Fits parking brake on all mowers
- Replaces **Dixie Chopper 65244**



DIXIE CHOPPER continued

Part # DC13296

- Stud Deck Lift
- 1/2" - 13 stud

Replaces *Dixie Chopper S-114*
NEW!



EXMARK

Part # DP12565

- Axle Nut
- 3/8" - 16 nylock

Replaces *Exmark 3296-39*



Part # DP12564

- Axle Screw
- 3/8" - 24 x 2

Replaces *Exmark 3211-46*



Part # EX11566

- Blade Bolt
- 5/8" - 18 thread x 2-3/4"
- Cap Screw
- Yellow zinc

Replaces *Exmark 103-0862*

NEW!



Part # EX12633

- Blade bolt
- Screw/Blade Bolt
- HH 1/2-20 x 2-1/4 Grade 8
- Fits Triton Blades
- 2-1/4" L x Thread Size 1/2 - 13

Replaces *Exmark 3213-6*

NEW!



Part # EX13240

- Blade Bolt
- Screw/Blade Bolt
- 1/2-20 x 2" Grade 8
- 2" L x 1/2" Thread

Replaces *Exmark 3213-5*

NEW!



Part # DP7249

- Blade Spacer
- 1/2" ID x 1" OD x 1/4" thick

Replaces *Scag*



Part # P322145

- Caster Yoke
- For Viking and Metro

Replaces *Exmark 322145*



EXMARK continued

Part # EX642111

- Caster Yoke
- Fits models Lazer Z
- 13 x 650 x 6
- 1/2" ID x .993 OD

Replaces *Exmark 1-642111-01*

NEW!



Part # P48064

- Caster Yoke
- Yoke: 6"
- Fits Lazer Z
- Threaded, w/nut

Replaces *Exmark 1-632511-01*



Part # EX8625

- Caster Yoke
- Yoke: 4-1/2"
- Fits Turf Ranger and Turf Tracer 52" and 60" cut
- Fits Explorer 52" and 60" cut

Replaces *Exmark 1-522143*



Part # EM28

- Shock damper
- Fits model Lazer Z
- 5/16" diameter hole tooth ends
- 7" closed length
- 11" extended length

Replaces *Exmark 103-2913, 1-523027, 103-4079; 109-2339*



Part # EX1160027

- Damper motion control
- Fits Lazer Z & Toro Z Master

Replaces *Exmark 116-0027*

NEW!



Part # EX1092339

- Damper motion control
- Replaces *Exmark 109-2339, 1-523027, 103-4079, 103-2913*

NEW!



Part # EX1323385

- Belt cover knob
- Fits models Lazer Z and Viking 36", 48", 52" decks
- 1-1/8" L
- 5/16" - 18 THD
- 6 knobs per unit

Replaces *Exmark 1-323385*



EXMARK continued

Part # P45030

- Bushing
 - Fits Viking, Explorer, Metro, Turf Tracer and Turf Ranger
 - Bottom bushing for caster yoke support arm
 - 7/8" ID x 1-1/8" OD x 1-1/4" H
- Replaces **Exmark 1-303044, 1-303514**



Part # P09804

- Spacer
 - 7/8" ID x 1-1/2" OD x 1/2" thick
- Replaces **Exmark 303044; Bunton PJH054; Jacobsen 553668; J Deere M85178; Scag 43037-01**



Part # P09802

- Blade Spacer
 - 5/8" ID x 1" OD x 1/4" H
- Replaces **Exmark 1-303164, 1-323539**



Part # P48009

- Spanner Bushing
 - Fits Turf Ranger, Turf Tracer, Viking Metro model 80,000 series and higher with 36", 48", 52", 60" decks
- Replaces **Exmark 513547**



Part # P45031

- Wheel Bearing
 - Heavy duty style
 - Fits Metro models
 - 1.006" ID x 2.002" OD x .562" H
- Replaces **Exmark 1-323329**



Part # EX1523328

- Wheel Motor
 - Fits Lazer Z models
- Replaces **Exmark 1523328**



Part # P27501

- Wheel Motor
 - For models TURF TRACER, TRACER XP and VIKING
- Replaces **Exmark 1-603718**
NEW!



Part # EX1030063

- Wheel Seal
 - Fits Lazer Z
 - 1.112" ID x 1.787" OD x .464 H
- Replaces **Exmark 103-0063**



EXMARK continued

Part # EX1633581

- Wheel Bearing Spacer
 - Fits Lazer HP 44", 48" and 52" cut decks
 - .741" ID x 1.25" OD x .620" H
- Replaces **Exmark 1-633581**



Part # DP9579

- Coupler with cover
 - Fits 5 speed mowers
 - Comes with grease fitting and cover
 - 9 spline center
 - Used with our 05-9580 drive shaft
- Replaces **Exmark 1-324340, 1-323501**



Part # DP10813

- Short swivel
 - Bore Size: 11/32"
 - OD (Pin): 5/16"
 - Shoulder Length: 1/2"
 - Total Length: 1-7/32"
- Replaces **Exmark 603676**



Part # DP8250

- Jackshaft coupler with safety cover
 - For 36", 48", 52" and 61" walk-behind mowers
 - Comes with grease fitting and safety sleeve (36 spline)
- Replaces **Exmark 46513, 48266, 1-324157; Encore 363353; Toro 51-4260**



Part # DP8267

- Brake Band
 - Fits 32" and 48" variable and 5 speed decks (right side)
- Replaces **Exmark 1-302037**



Part # DP10415

- Brake band
 - Fits Metro walk-behind mowers
 - 3/4" W x 6-5/8" dia.
- Replaces **Exmark 1-323262**



Part # DP8266

- Brake Band
 - Fits 32" and 48" variable and 5 speed decks
 - Removable brake bands
- Replaces **Exmark 1-302036**



Part # DP9752

- Brake drum
 - Fits Metro units
 - 2-1/4" ID x 6" OD x 1-1/4" W
- Replaces **Exmark 1-323261**



EXMARK continued

Part # DP28540

- Quick Pin
 - Fits 36", 52", 61" walk behinds
 - 2" OD x 1-3/4" L x 7/16" OD of pin
- Replaces *Exmark 1-809020*



Part # DP8419

- Wheel Bolt
 - 5-1/2" L x 1/2" thread size
- Replaces *Exmark 800334*



GREAT DANE

Part # DP9757

- Brake drum
 - 2-1/4" ID x 6" OD x 1-1/2" W
 - 2-5/8" bolt center
- Replaces *Great Dane D48003; Encore 363190; Scag 48209; Jacobsen JA18219-8*



HONDA

Part # DP10862

- Blade brake clutch plate
 - Fits Honda walk-behind mowers
- Replaces *Honda 75150-VA3-J01*



Part # DP 12749

- Handle Knob
 - Fits walk-behind mowers
 - 8mm 5-star
- Replaces *Honda 53125-VA4-K10*



HUSQVARNA

Part # DP10812

- Lower Swivel
 - Thread size: 3/16"-24
 - OD (Pin): 3/16"
 - Shoulder length: 7/16"
 - Total Length: 1"
- Replaces *Husqvarna 539-109334*



SCAG

Part # 11040

- Blade bolt
 - 1/2" x 7-1/2" L
- Replaces *Scag 04001-134*



Part # 11041

- Blade bolt
 - 1/2" x 9-1/2" L
- Replaces *Scag 04001-167*



Part # 11076

- Blade hex nut
 - 1/2"-13
- Replaces *Scag 0421-07*



Part # P48202

- Caster Yoke
 - Fits front casters
 - OD Shaft: 7/8"
 - Spread: 4-1/8"
 - Axle holes: 1/2" dia.
 - Top Shaft: 6-1/2" L
- Replaces *Scag 45006; Encore 362005; Wright 9346001*



Part # SC10358

- Clamping Knob
 - 3 prong
 - 3/8" -16 male thread clamping knob
- Replaces *Scag 481625-01*



Part # SC11562

- Gas Damper
 - 5/16" x 18 ball studs
- Replaces *Scag 461090*



Part # SC482794

- Gas Damper
- Replaces *Scag 482794*
NEW!



Part # SC482795

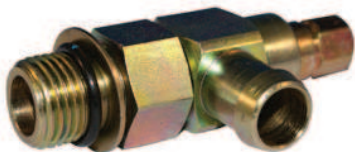
- Gas Damper
- Replaces *Scag 482795*



SCAG continued

Part # SC1211

- Oil drain valve
 - Metric M16 x 1.5 threads
- Replaces **Scag 482351**



Part # SC12112

- Oil drain valve
 - Metric M20 x 2.5 threads
- Replaces **Scag 482349**



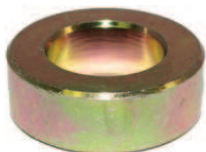
Part # SC12259

- Oil drain valve
 - 3/8" - 18 NPTF thread
- Replaces **Scag 482352**



Part # CS128

- Caster Spacer
 - Fits 10" pneumatic front casters
 - 7/8" ID x 1-1/2" OD x 1/2" H
- Replaces **Scag 43037-01; Exmark 1-303314**



Part # SC3648

- Caster Yoke Spacer
- Fits 32", 36" and 48" on pneumatic front caster assembly
- 1" ID x 1-11/16" OD x 1/2" H



Part # P45127

- Bushing for caster support arm
 - For pivot wheel on 12, 13 & 17 HP Turf Runner
- Replaces **Scag 48100-01; Velke VPIVOT BUSH**



Part # P45188

- Spanner bearing
 - 1/2" ID x 5/8" OD x 4-1/4" L
- Replaces **Scag 43022; Bobcat 43180; Ferris 1541659**



Part # P48141

- Blade Spacer - 1/4"
 - 5/8" ID x 1-1/2" OD x 1/4" Thick
- Replaces **Scag 43278, 43038; Encore 363170; Jacobsen 552187**



SCAG continued

Part # AC7249

- Blade spacer
- 1/2" blade spacer for Scag, Bobcat, Bunton, Snapper and Exmark



Part # P04125

- Blade bolt
 - Fits Scag mid-size mower
 - 32", 40", 48", 52", 61" & 72" cut
 - 1/2" OD x 9-7/8" L
- Replaces **Scag 04001-41**



Part # P45125

- Idler Arm Shaft Spacer - 1/2"
 - Fits 32", 36", 40", 48", 52", 61" & 72" decks
 - 3/4" ID x 7/8" OD x 1/2" Thick
- Replaces **Scag 48100-05**



Part # SC4029

- Knob
 - Fits Turf Tiger
 - 6 per unit
- Replaces **Scag 04029-03**



Part # DP7787

- Brake Band
 - For 36", 40", 48", 52" and 61" mid-size mowers
 - 3/4" W x 7" dia.
- Replaces **Scag 48210; Snapper 17048, 74810; Exmark 1-513048; Encore 363176; Jacobsen 182222**



Part # DP24080

- Wheel Motor
 - Fits Turf Tiger
- Replaces **Scag 482639**



Part # SC11040

- Wheel bolt
 - Fits midsize mowers, Turf Tiger and Turf Cubs
 - 1/2" x 7-1/2"
- Replaces **Scag 04001-134**
NEW!



SCAG continued

Part # SC11041

- Wheel bolt
- Fits midsize mowers, Turf Tiger and Turf Cubs
- 1/2" x 9-1/2"

Replaces Scag 04001-167

NEW!



TORO

Part # DP8265

- Brake band
- Fits 32" thru 61" deck walk-behind mowers

Replaces Toro 51-4700



Part # DP8296

- Brake drum
- Fits Proline Z models
- 2-5/16" ID x 5" OD x 2-3/4" center to center

Replaces Toro 51-4180



Part # P48067

- Caster Yoke
- Yoke: 3-1/2"
- For 36", 27", 44", 52" & 62" cut
- Models: 30136, 30137, 30144, 30152, 30162

Replaces Toro 74-0251



Part # DP8250

- Jackshaft coupler with safety cover
- For 36", 48", 52" and 61" walk-behind mowers
- Comes with grease fitting and safety sleeve (36 spline)

Replaces Exmark 46513, 48266, 1-324157; Encore 363353; Toro 51-4260

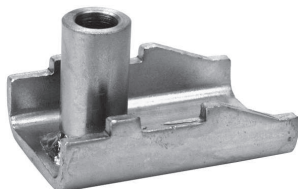


Part # TO13404

- Front Pivot Arm Assembly
- Fits Toro commercial mowers

Replaces Toro 61-8300

NEW!

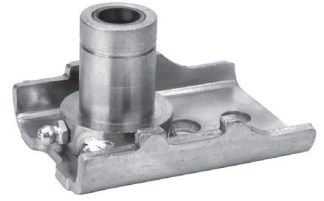


TORO continued

Part # TO13405

- Rear Pivot Arm Assembly
- Fits Toro commercial mowers
- Replaces Toro 74-1851, 74-1841

NEW!



Part # TO13406

- Front Spring Arm Assembly
- Fits Toro commercial mowers

Replaces Toro 66-7560

NEW!

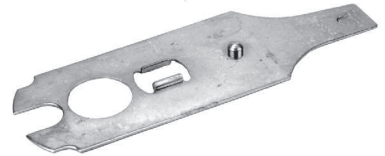


Part # TO13407

- Rear Spring Arm Assembly
- Fits Toro commercial mowers

Replaces Toro 66-7561

NEW!



Part # TO9874

- Spacer for Toro deck wheel
- Fits Toro Z Master anti-scalp roller wheel bolt

Replaces Toro 99-2842



Part # DP8419

- Wheel Bolt
- Fits Toro commercial mid-size 36", 37", 44", 52", 62" cut deck
- Models 30136, 31037, 30144, 30152, 30162
- Fits Toro wheel 68-8970
- 5-1/2" L x 1/2" thread size

Replaces Toro 325-19

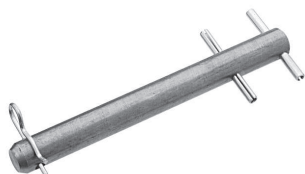


VELKE

Part # P8671

- Clevis pin
- Attaches Velke to mower bracket
- Fits all one wheel Velkes
- 1/2" OD x 4-29/32" L

Replaces *Velke VKPIN2-2*



Part # VE8651

- Wheel bolt kit
- Fits 9 x 350 x 4 caster wheel on all one wheel Velkes
- Includes VE8412 washers, VE8652 wheel bolt, VE8653 lock nut

Replaces *Velke VKAXLE2-2*

NEW!



Part # VE8652

- Wheel bolt only
- 1/2" - 20 x 4-29/32"

NEW!



Part # VE8653

- Lock nut only
- Nylon insert lock nut
- Zinc plated
- 1/2" - 20

NEW!



WALKER

Part # WA11833

- Deck pin bushing
- Fits 36", 42", 48" & 54" decks
- 4 per unit

Replaces *Walker 5740-2*



Part # WA11834

- Deck pin bushing
- Fits 52" and 62" decks
- 4 per unit

Replaces *Walker 8740*



Part # P65230

Part # 80230 (includes hardware)

- Blade adapter

Replaces *Walker 5706*



LINCH PINS

Part #P02443

- Linch Pin
- Pin diameter: 3/16"
- Length: 1-1/2" under head

Replaces *AMF 1501-901*;
Bobcat 64173-05; *Bolens 1719762*;
Exmark 809006; *Kees 903798*;
Snapper 76967



Part #P02444

- Linch Pin
- Pin diameter: 1/4"
- Pin Length: 1-3/4" under head
- Zinc plates

Replaces *MTD 714-0143*; *Noma 73842*



Part #P02445

- Linch Pin
- Pin diameter: 5/16"
- Pin Length: 1-3/4"
- Ring dia: 1-3/8"
- "D" shaft style

Replaces *MTD 714-0143*; *Noma 73842*



Part # SC04066

- Linch Pin
- Fits 36", 48", 52", 61" cut walk-behinds
- OD: 3/16"
- Length: 7/16"
- Use with our # P285498

Replaces *Scag 04066-01*



HYDROSTATIC PUMPS



Part # OE # Description

BOBCAT

DP440	<i>Hydro-Gear BDP-10A-440</i>	
DP119P	<i>Hydro-Gear BDP-10L-119P</i>	Bobcat walk-behind, ZTR rider

BUNTON

DP117P	<i>Hydro-Gear BDP-10L-117P</i>	Bunton walk-behind
DP126	<i>Hydro-Gear BDP-10L-126</i>	Bunton Rider 126 - Left
DP127P	<i>Hydro-Gear BDP-10L-127P</i>	Bunton Rider 217 - Right

DIXIE CHOPPER

P12093	<i>Dixie Chopper 65071 Hydro-Gear BDP-10A-207 & 201-217</i>	
P12092	<i>Dixie Chopper 65070 Hydro-Gear BDP-10A-313, 301, 302 and 308</i>	
P11804	<i>Dixie Chopper 2000028 Hydro-Gear BDP-10A-418 Parker H110A1011KMAAA Encore 583491 Hustler 781047</i>	
DP113	<i>Hydro-Gear BDP-10L-113</i>	Dixie Chopper Right
DP112P	<i>Hydro-Gear BDP-10L-112P</i>	Dixie Chopper Left

EXMARK

P11762	<i>Exmark 103-4611 Hydro-Gear BDP-10A-319</i>	Fits Turf Tracer models
P11763	<i>Exmark 103-1942 Hydro-Gear BDP-10A-414</i>	Fits Lazer Z HP models
P11764	<i>Exmark 103-2675 Hydro-Gear BDP-10A-427</i>	Fits Lazer A models
P11765	<i>Exmark 103-5490 Exmark 103-4247 Hydro-Gear BDP-10A-437</i>	Fits Turf Tracer models
P11766	<i>Exmark 103-4040 Hydro-Gear BDP-10A-450</i>	Fits Lazer Z CT models
DP433	<i>Hydro-Gear BDP-10A-433</i>	Exmark 72" Hydro-Gear pump
DP121P	<i>Hydro-Gear BDP-10L-121P</i>	Exmark Lazer, Viking TT

HYDROSTATIC PUMPS continued

Part #	OE #	Description
FERRIS		
P11572	<i>Ferris 22571</i> <i>Hydro-Gear BDP-10A-432</i>	Fits models IS1000 and IS30000
GRAVELY		
DP902	<i>Hydro-Gear BDP-10L-902</i>	Gravelly Pro-Master Right
GREAT DANE		
P11575	<i>Great Dane D18312</i> <i>Hydro-Gear BDP-10A-303</i>	Right hand pump
P11573	<i>Great Dane D18313</i> <i>Hydro-Gear BDP-10A-403</i>	
HUSQVARNA		
DP404	<i>Hydro-Gear BDP-10A-404</i>	
HUSTLER		
P11767	<i>Hustler 781062</i> <i>Hydro-Gear BDP-10A-300</i>	Right hand pump; Fits Z and Mini Z models
P11768	<i>Hustler 781047</i> <i>Hydro-Gear BDP-10A-400</i>	Left hand pump; Fits Z and Mini Z models
SCAG		
P11574	<i>Scag 482643</i> <i>Dixie Chopper 200029</i> <i>Hydro-Gear BDP-10A-316</i>	Scag Tiger Cub Pump - Left
DP429	<i>Hydro-Gear BDO-10A-429</i>	Scag Tiger Pump - Left
SP317	<i>Hydro-Gear BDP-10A-317</i>	Scag Turf Tiger Pump - Right
P11576	<i>Scag 482644</i> <i>Hydro-Gear BDP-10A-419</i>	Fits models STWC
SC48551	<i>Scag 48551</i>	Fits models SWZ walk-behinds, STT161 hydrostatic, STC, SMTZ, SCR; 1000 PSI continuous operating pressure
DP305	<i>Hydro-Gear BDP-10A-305</i>	Fits Scag Tiger Cub
DP364	<i>Hydro-Gear BDP-10A-364</i>	Scag Pump Rider
DP366	<i>Hydro-Gear BDP-10A-366</i>	Scag
DP464	<i>Hydro-Gear BDP-10A-464</i>	Scag TT
DP117P	<i>Hydro-Gear BDP-10L-117P</i>	Scag walk-behind and Tiger
TORO		
DP118	<i>Hydro-Gear BDP-10L-118</i>	Toro walk-behind
DP121P	<i>Hydro-Gear BDP-10L-121P</i>	Toro Z 252

BOBCAT

Part # P33384

- PTO Switch
 - 2 positions, 5 terminals
 - 1/2" mounting stem
 - Includes hardware
- Replaces **Bobcat 128009**



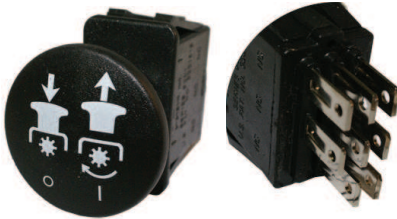
Part # P33082

- PTO Switch
 - Push pull, snap mount
 - Red knob
 - 2 positions, 5 terminals
- Replaces **Bobcat 2188153**



Part # EP30798

- PTO Switch
 - 2 positions, 8 terminals
- Replaces **Bobcat 1985032**



Part # P33022

- Interlock Switch
 - 2 position, 2 terminals
 - Normally open
- Replaces **Bobcat 38382**



Part # P33027

- Interlock Switch
 - 2 positions, 2 terminals
 - Normally closed
- Replaces **Bobcat 38383**



Part # P33028

- Interlock Switch
 - Plunger type
 - 2 positions, 4 terminals
 - Normally closed
- Replaces **Bobcat 108208**



Part # P33386

- Starter Switch
 - Magneto
 - 3 positions, 5 terminals
 - 5/8" mounting stem
- Replaces **Bobcat 48032B**



BUNTON

Part # EP30798

- PTO Switch
 - 2 positions, 8 terminals
- Replaces **Bunton PL7994**



Part # EP30405

- Interlock Switch
 - 2 positions, 2 terminals
 - Normally open
- Replaces **Bunton PL4518**



Part # EP30538

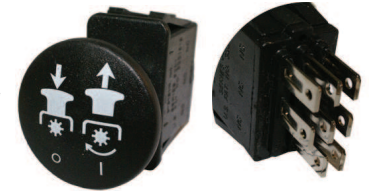
- Starter Switch
 - Magneto
 - 3 positions
 - 5/8" mounting stem
- Replaces **Bunton PAL0903**



ENCORE

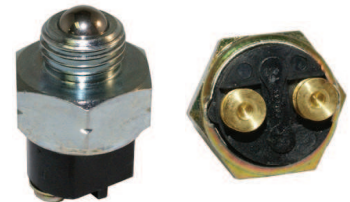
Part # EP30798

- PTO Switch
 - 2 position, 8 terminals
- Replaces **Encore 523030, 523031**



Part # EP30198

- Safety Switch
 - Fits walk behind models
 - 2 positions, 2 terminals
 - 9/16" mounting stem
 - Normally open
- Replaces **Encore 363207**



Part # P33028

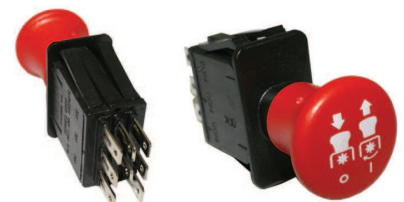
- Interlock Switch
 - 2 positions, 4 terminals
 - Normally closed
- Replaces **Encore 523034**



EVERRIDE

Part # EP30330

- PTO Switch
 - 2 positions, 8 terminals
- Replaces **EverRide 136574**



EXMARK

Part # EP30300

- Relay Assembly
 - 5 terminals
 - Made by an OEM supplier
- Replaces **Exmark 1-643275, 643275, 98-7249**



Part # P33019

- Seat Switch
 - 2 positions, 2 terminals
 - Normally closed
- Replaces Exmark 740275, 1-740275



Part # P33093

- PTO Switch
 - Fits model Lazer Z
 - 2 positions, 8 terminals
 - Yellow knob
- Replaces **Exmark 103-5221, 1-633673**



Part # P33002

- PTO Switch
 - Push-pull snap mount
 - 5 terminal
- Replaces **Exmark 633673**



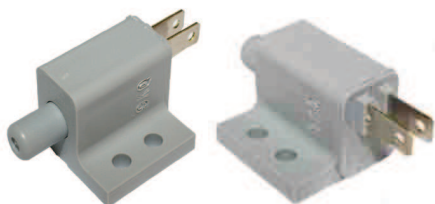
Part # EP30508

- PTO Switch
 - 2 positions, 5 terminals
 - 1/2" mounting stem
 - Includes hardware
- Replaces **Exmark 1-543018**



Part # EP30405

- Interlock Switch
 - 2 positions, 2 terminals
 - Normally open
- Replaces **Exmark 1-513051**



Part # P33028

- Interlock Switch
 - Plunger type
 - 2 positions, 4 terminals
 - Normally closed
- Replaces **Exmark 1-633111**



Part # EP30409

- Interlock Switch
 - 2 positions, 2 terminals
 - Normally closed
- Replaces **Exmark 1-513152**



EXMARK continued

Part # P33027

- Interlock Switch
 - Normally closed
 - 2 positions
 - 2 terminals
- Replaces **Exmark 3838**



Part # P33024

- Starter Switch
 - Fits models 32", 36", 37", 44" and 52" mid-size commercial mowers with pull start
 - Magneto
 - 5/8" mounting stem
 - On/off switch
- Replaces **Exmark 1-403121**



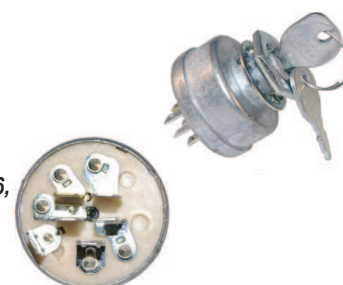
Part # P33397

- Starter Switch
 - Fits model Turf Tracer
 - Magneto
 - 3 positions, 5 terminals
 - 5/8" mounting stem
- Replaces **Exmark 1-543070**



Part # EX11822

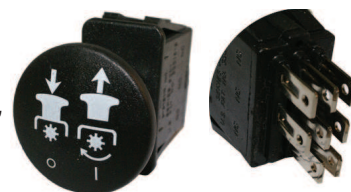
- Starter Switch
 - Fits models 60" and 72" Lazer Z and Lazer Z XP
 - 3 positions, 6 terminals
 - 5/8" mounting stem
- Replaces **Exmark 103-0206, 109-4736, 88-9830, 104-2541**



FERRIS

Part # EP30798

- PTO Switch
 - 2 positions, 8 terminals
- Replaces **Ferris 22180, 5022182, 5022180**



Part # EP30405

- Interlock Switch
 - 2 positions, 2 terminals
 - Normally open
- Replaces **Ferris 21451, 5021451**



Part # P33027

- Interlock Switch
 - 2 positions, 2 terminals
 - Normally closed
- Replaces **Ferris 21769, 5021769**



FERRIS continued

Part # P33028

- Interlock Switch
- 2 positions, 4 terminals
- Normally closed

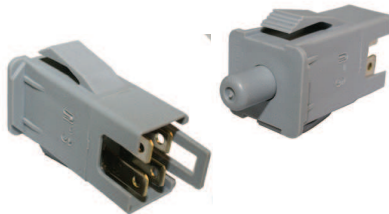
Replaces *Ferris 22095, 5022095, 5022094*



Part # P33026

- Interlock Switch
- 2 positions, 4 terminals
- Push-in type starter switch

Replaces *Ferris 22182, 5023455*



Part # P33024

- Starter Switch
- Magneto
- 2 positions, 2 terminals
- 5/8" mounting stem
- On/off switch

Replaces *Ferris 1521842, 5021842*

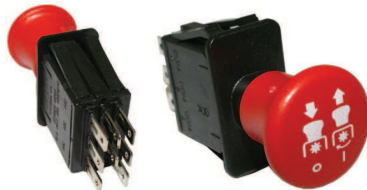


GRASSHOPPER

Part # EP30330

- PTO Switch
- 2 positions, 8 terminals

Replaces *Grasshopper 183925*



Part # EP30457

- Seat Switch
- Fits models 120, 220, 225 and 321D, 600, 700 and 900 series
- Fits our 420-423 high back seat
- Normally open

Replaces *Grasshopper 1833870*



Part # P33410

- PTO Switch
- 2 positions, 6 terminals
- 1/2" mounting stem
- Includes mounting hardware

Replaces *Grasshopper 184082, 604796*



Part # EP30538

- Starter Switch
- Magneto
- 3 positions, 5 terminals
- 5/8" mounting stem

Replaces *Grasshopper 183806*



GRAVELY

Part # EP30192

- Safety Switch
- Fits models G series PTO and Pro walk behinds
- 2 positions, 2 terminals
- 9/16" mounting stem
- Normally open

Replaces *Gravelly 020916*



Part # EP30496

- Safety Switch
- Fits models Pro Power, Pro Master, Pro, 2 and 4-wheel tractors
- 2 positions, 2 terminals
- 9/16" mounting stem
- Normally closed

Replaces *Gravelly 034640*



Part # P33384

- PTO Switch
- Fits models Pro Master 200, 300 and tractors
- 2 positions, 5 terminals
- 1/2" mounting stem
- Includes hardware

Replaces *Gravelly 045848*



Part # P33395

- Starter Switch
- Fits models 34586-34690 4-wheel tractors and 35713-35716 2-wheel tractors
- Magneto
- 4 positions, 5 terminals
- 5/8" mounting stem

Replaces *Gravelly 018272*



Part # EP33393

- Starter Switch
- Fits models Promaster 30-H, 50, 100, 200, 300, 400 and 2 and 4-wheel tractors
- Battery
- 3 positions, 5 terminals
- 9/16" mounting stem

Replaces *Gravelly 019223*



Part # EP33388

- Starter Switch
- Fits models 1232-H and 1238-H tractors, Pro walk behinds and Pro riders
- Magneto
- 3 positions, 5 terminals
- 9/16" mounting stem

Replaces *Gravelly 044767*



GREAT DANE

Part # EP30413

- Safety Switch
- 2 positions, 2 terminals
- Normally open

Replaces **Great Dane D38001, AM103119**



Part # P33019

- Seat Switch
- 2 positions, 2 terminals
- Normally closed

Replaces **Great Dane D28041, AM104403**



Part # EP30798

- PTO Switch
- 2 positions, 8 terminals

Replaces **Great Dane D38005**



Part # P33027

- Interlock Switch
- 2 positions, 2 terminals
- Normally closed

Replaces **Great Dane D38085, 5021769**



Part # EP30405

- Interlock Switch
- Fits models WG4815E, WG2615E and WH3615E
- 2 positions, 2 terminals
- Normally open

Replaces **Great Dane 5021451**



Part # EP9663

- Interlock Switch
- Plunger interlock
- Single post, right angle snap mounted
- Normally open

Replaces **Great Dane D38001**



Part # EP30401

- PTO Switch
- 2 positions, 5 terminals

Replaces **Great Dane AM118802**



Part # AC10723

- Ignition Switch
- For magneto ignition
- 6 terminal, 3 position
- 20mm x 1.25 mounting stem

Replaces **Great Dane TCA15075**

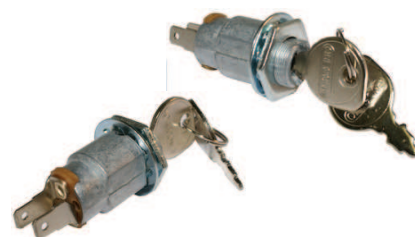


GREAT DANE continued

Part # P33024

- Starter Switch
- Magneto
- 2 positions, 2 terminals
- 5/8" mounting stem
- On/off switch

Replaces **Great Dane D18090**



HUSQVARNA

Part # EP30300

- Relay Assembly
- Fits models IZ4821T, IZ6125T, LZ5227TXP, LZ6127T
- 5 terminals
- Made by an OEM supplier

Replaces **Husqvarna 532 10 29-14, 532 10 97-48**



Part # EP30702

- Interlock Switch
- 2 positions, 2 terminals
- Push-in type starter switch

Replaces **Husqvarna 532 15 36-64, 532 17 61-38**



Part # EP30413

- Safety Switch
- Fits models IZ4821T and IZ6125T
- 2 positions, 2 terminals
- Normally open

Replaces **Husqvarna 532 16 07-84, 539 10 75-23**



Part # EP30686

- Interlock Switch
- 2 positions, 4 terminals
- Normally closed

Replaces **Husqvarna 532 10 95-53, 539 10 10-80**



Part # EP30409

- Interlock Switch
- 2 positions, 2 terminals
- Normally closed

Replaces **Husqvarna 539 92 34-08**



Part # EP30405

- Interlock Switch
- Fits models WG4815E, WG2615E and WH3615E
- 2 positions, 2 terminals
- Normally open

Replaces **Husqvarna 532 10 44-45, 539 91 90-98**



HUSQVARNA continued

Part # EP30690

- Seat Switch
- 2 positions, 2 terminals
- Normally closed

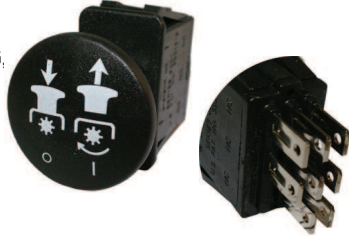
Replaces *Husqvarna* 506 90 96-01, 532 12 13-05



Part # EP30798

- PTO Switch
- Fits models YTH542XP, YTH1542XPG, YTH1848XP and YTH1848XPF
- 2 positions, 8 terminals

Replaces *Husqvarna* 532 17 46-51, 539 10 17-68, 532 16 94-17



Part # P33383

- Starter Switch
- Magneto
- 4 positions, 7 terminals
- 5/8" mounting stem

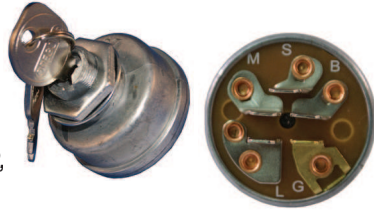
Replaces *Husqvarna* 532 14 03-01



Part # EP33397

- Starter Switch
- Magneto
- 3 positions, 5 terminals
- 5/8" mounting stem

Replaces *Husqvarna* 532 10 29-72, 532 14 54-99, 532 15 89-13



Part # P33386

- Starter Switch
- Magneto
- 3 positions, 5 terminals
- 5/8" mounting stem

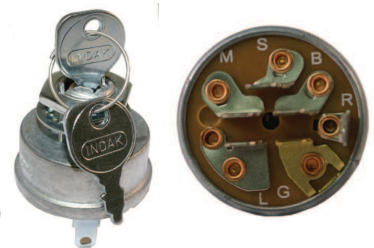
Replaces *Husqvarna* 532 36 54-02



Part # P33399

- Starter Switch
- Fits models WH4817EFQ and WH5319EFQ
- Magneto
- 3 positions, 6 terminals
- 5/8" mounting stem

Replaces *Husqvarna* 539 10 17-70



Part # P33390

- Starter Switch
- Fits models WG4815E, WG2615, WH3615E; for manual and push button start models
- Magneto
- 2 positions, 1 terminal
- 5/8" mounting stem
- Single screw terminal

Replaces *Husqvarna* 539 91 18-53



HUSQVARNA continued

Part # EP30706

- Starter Switch
- Fits riding mowers
- 3 positions, 5 terminals
- Key included

Replaces *Husqvarna* 532 14 03-99, 532 14 49-21, 532 15 48-55, 532 16 30-88, 532 17 87-44



Part # EP30445

- Starter Switch
- Fits models YTH1542XP, YTH1848XP, LTH1342, LTH1342A, YTH1542XPG and YTHP1542
- 4 positions, 7 terminals

Replaces *Husqvarna* 532 17 55-66, 532 16 39-68



Part # P33099

- Starter Key
- 2-3/8" L
- Fits Delta key switches

Replaces *Husqvarna* 543-14 04-01, 532 14 04-02, 532 14 04-03



Part # P42008

- Starter Key
- Indak key
- Fits all lawnmowers with Indak switches
- Package of 2

Replaces *Husqvarna* 109310, 532 12 21-47



Part # P33180

- Stop Switch
 - Fits many Husqvarna models
- Replaces *Husqvarna* 503 717 901
NEW!



HUSTLER

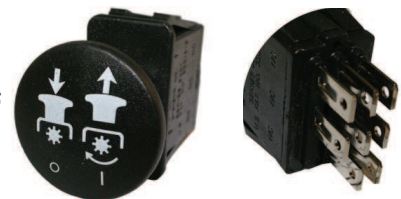
Part # EP30300

- Relay Assembly
 - 5 terminals
 - Made by an OEM supplier
- Replaces *Hustler* 026237



Part # EP30798

- PTO Switch
 - 2 positions, 8 terminals
- Replaces *Hustler* 776476



HUSTLER continued

Part # EP30457

- Seat Switch
- Fits models Z, Mini Z, Super Mini Z and Super Z

• Normally open

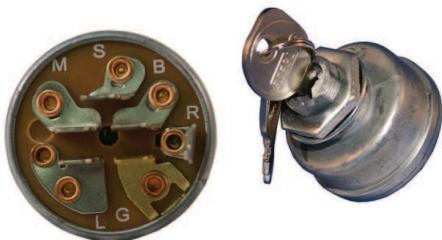
Replaces **Hustler 782177**



Part # P33397

- Starter Switch
- Magneto
- 3 positions, 5 terminals
- 5/8" mounting stem

Replaces **Hustler 045898**



JOHN DEERE

Part # JD9655

- Snap-in mounted
- 3 position switch

Replaces **John Deere AM122881**



Part # P33319

- Relay Switch
- Fits John Deere ZTRAK models

Replaces **Bosch 0332 209-150**



Part # 9663

- Safety Switch
- Fits models 240, 245, 260, 285, 320, STX30, STX38 front decks, 510 and F525

• 2 positions, 2 terminals

• Normally open

Replaces **John Deere AM103119**



Part # P33093

- PTO Switch
- Yellow Knob
- 2 positions, 8 terminals

Replaces **John Deere AM131966**



Part # P33002

- PTO Switch
- Push pull snap mount
- 2 positions, 5 terminal

Replaces **John Deere AM118802, AM119139**



JOHN DEERE continued

Part # P33384

- PTO Switch
- Fits models PC2150, 220-285, 318, 420 and 430 lawn and garden tractors

• 2 positions, 5 terminals

• 1/2" mounting stem

• Hardware included

Replaces **John Deere AM39489**



Part # P33027

- Interlock Switch
- 2 positions, 2 terminals
- Normally closed

Replaces **John Deere AM108483**



Part # P33022

- Interlock Switch
- 2 positions, 2 terminals
- Normally open

Replaces **John Deere AM104884**



Part # EP30686

- Interlock Switch
- 2 positions, 4 terminals
- Normally closed

Replaces **John Deere AM128925**



Part # P33019

- Seat Switch
- 2 positions, 2 terminals
- Normally closed

Replaces **John Deere AM104403**



Part # P33350

- Ignition Switch
- For battery coil ignition
- 5 spade terminal
- 3 position

• Require 5/8" mounting hole

Replaces **John Deere M90206**



Part # P33386

- Starter Switch
- Fits models JD321 commercial walk behinds, 111 series below 1200

• Magneto

• 3 positions, 5 terminals

• 5/8" mounting stem

Replaces **John Deere AM102551**



JOHN DEERE continued

Part # EP30249

- Starter Switch
- Battery
- 3 positions, 5 terminals
- 9/16" mounting stem

Replaces **John Deere AM103286, AM32318**



Part # AC10723

- Starter Switch
- Fits models F910, F930, front mounts, 130, 165, 170, 175, 180, 185, F912, F915, F925, RX73, RX75, RX95, SX75 and SX95
- Magneto
- 3 positions, 6 terminals
- 13/16" mounting stem

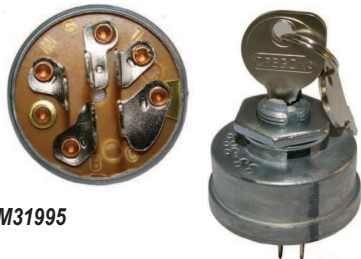
Replaces **John Deere AM101561, TCA15075**



Part # EP30070

- Starter Switch
- Fits models 141 PC2189 and 142-152 PC277 vacuum sweepers
- Magneto
- 3 positions, 5 terminals
- 9/16" mounting stem

Replaces **John Deere AM102544, AM31995**



Part # JD9166

- Starter Switch
- Fits models S910, S930 front mount, 108, 112, 116 lawn tractors, 316, 318, 420 garden tractors, GS25, GS30, GS45, GS75, HD45, HD75, 111 series 12000 and higher
- Magneto
- 3 positions, 6 terminals
- 9/16" mounting stem

Replaces **John Deere AM38227**



Part # EP30445

- Starter Switch
- Fits models L100, L105, L107, L110, L120, L130, G110, GY18 and some Scotts and Sabre models
- 4 positions, 7 terminals

Replaces **John Deere GY20074**



Part # P33099

- Starter Key
- 2-1/8" L
- Fits Delta key switches



Part # P42008

- Ignition key
 - Fits 95% of rotary mowers
- Replaces **John Deere M40718**



HONDA

Part # 94425

- Stop switch
 - Fits most Honda engines
- Replaces **Honda 36100-883-005, 36100-ZE1-015**



Part # P33542

- Oil sensor switch
 - Oil alert diode assembly for GX160-390 engines
- Replaces **Honda 34150-ZH7-003**



Part # P33540

- Oil level sensor switch
 - Fits GX240-390 engines
- Replaces **Honda 15510-ZE2-033**



Part # P33541

- Oil level sensor switch
 - Fits GX160 engines
- Replaces **Honda 15510-ZE1-033**



KOHLER

Part # EP55493

- Oil Pressure Switch
 - Fits models CH11-CH14, CV11-CV15, CH18-CH25 and CV18-CV22
- Replaces **Kohler 25 099 06-S, 25 099 24-S, 25 099 27-S**



Part # P33394

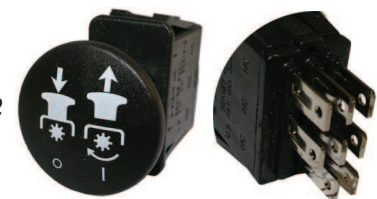
- Starter Switch
 - Fits models CH11, CH12.5, CH14, CH18, CH20, CH22, CH25, CV12.5, M8, M10, M12, M16, M18, M20, TH16 and TH18
 - Magneto
 - 3 positions, 6 terminals
- Replaces **Kohler 25 099 02, 25 099 04-S**



SCAG

Part # EP30798

- PTO Switch
 - 2 positions, 8 terminals
- Replaces **Scag 48168, 483162**



SCAG continued

Part # P483957

- PTO Switch
- 10 amp
- Replaces **Scag 483957**
- NEW!**



Part # P33002

- PTO Switch
- Push pull snap mount
- 2 positons, 5 terminals
- Replaces **Scag 481635**



Part # P33410

- PTO Switch
- 2 positions, 6 terminals
- 1/2" mounting stem
- Includes mounting hardware
- Replaces **Scag 48787**



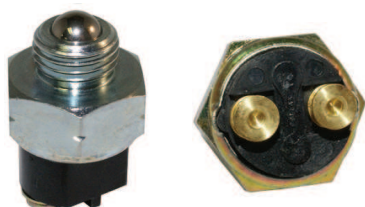
Part # EP30413

- Safety Switch
- Fits walk behinds and Turf Tiger
- 2 positions, 2 terminals
- Normally open
- Replaces **Scag 481638**



Part # EP30193

- Safety Switch
- Fits walk behinds
- 2 positions, 2 terminals
- 9/16" mounting stem
- Normally open
- Replaces **Scag 48231**



Part # EP30496

- Safety Switch
- 2 positions, 2 terminals
- 9/16" mounting stem
- Normally closed
- Replaces **Scag 48021**



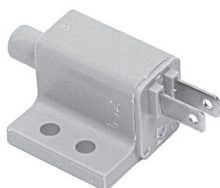
Part # P33019

- Seat Switch
- 2 positions, 2 terminals
- Normally closed
- Replaces **Scag 48717**



Part # P33022

- Interlock Switch
- 2 positions, 2 terminals
- Normally open
- Push pull, snap mount
- Replaces **Scag 481637**



SCAG continued

Part # EP9663

- Interlock Switch
- Plunger interlock
- Single post, right angle snap mounted
- Normally open
- Replaces **Scag 481638**



Part # P33350

- For battery coil ignition
- 5 spade terminal
- 3 position
- Requires 5/8" mounting hole
- Replaces **Scag 48018**



Part # P33019

- Single post
- Right angle snap mount
- Normally closed
- Replaces **Scag 48717; AYP 121305X; Exmark AM104403; MTD 725-3166**



Part # P33386

- Starter Switch
- Magneto
- 3 positions, 5 terminals
- 5/8" mounting stem
- Replaces **Scag 48017, 48017-01**



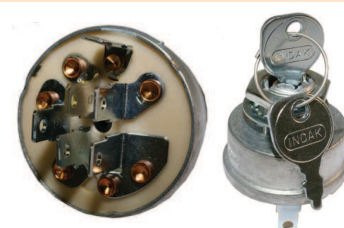
Part # P33024

- Starter Switch
- Magneto
- 2 positions, 2 terminals
- 5/8" mounting stem
- On/off switch
- Replaces **Scag 48609**



Part # P33399

- Starter Switch
- 3 positions, 6 terminals
- 5/8" mounting stem
- Includes lock washer, nut and keys
- Replaces **Scag 48798**



Part # P42008

- Ignition key
- Fits 95% of rotary mowers
- Replaces **Scag 4817-02**



Part # P33099

- Ignition key - universal
- Molded grip
- Fits plastic Delta switches
- Replaces **Scag**



SCAG continued

Part # SE10

- Scag Starter Solenoid
 - 3 pole style, 12 volt
 - 5/16"-24 studs
 - Grounded through base
- Replaces **Scag 48106**



TORO

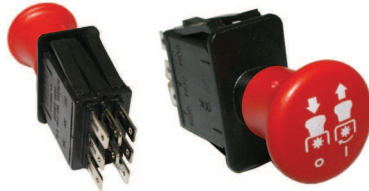
Part # EP30401

- PTO Switch
 - 2 positions, 5 terminals
- Replaces **Toro 92-6787, 92-6788, 93-9998, 93-9999, 94-2697, 95-4108, 95-7498**



Part # EP30330

- PTO Switch
 - 2 positions, 8 terminals
- Replaces **Toro 1-633673, 103-5221**



Part # EP30508

- PTO Switch
 - 2 positions, 5 terminals
 - 1/2" mounting stem
 - Includes hardware
- Replaces **Toro 37-2610, 92-6328**



Part # EP30686

- Interlock Switch
 - Fits 13AP60RP744, 13AX60RG744, 13AX60RH744 and 14AP80RP744
 - 2 positions, 4 terminals
 - Normally closed
- Replaces **Toro 112-0455**



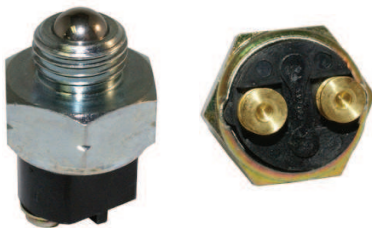
Part # EP9663

- Interlock Switch
 - Plunger interlock
 - Single post, right angle snap mounted
 - Normally open
- Replaces **Toro 82-2190**



Part # EP30496

- Safety Switch
 - 2 positions, 2 terminals
 - 9/16" mounting stem
 - Normally closed
- Replaces **Toro 28-4250**



TORO continued

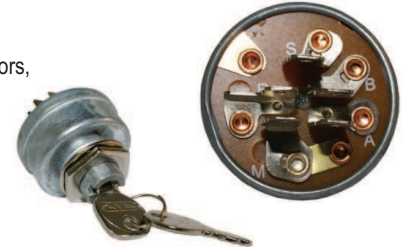
Part # P33386

- Starter Switch
 - Battery
 - 3 positions, 5 terminals
 - 5/8" mounting stem
- Replaces **Toro 103990**



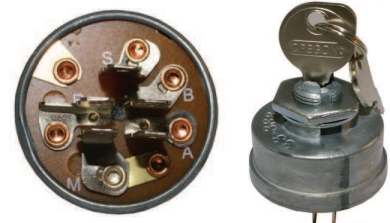
Part # P33386

- Starter Switch
 - Fits models Sand Pro aerators, Greensmaster 3000G and Reelmaster 216
 - Magneto
 - 3 positions, 5 terminals
 - 5/8" mounting stem
- Replaces **Toro 23-0660**



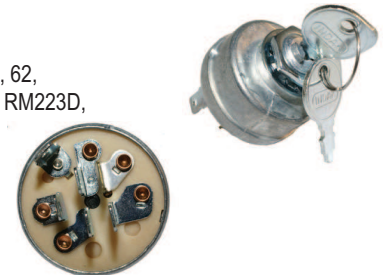
Part # P33388

- Starter Switch
 - Battery
 - 3 positions, 5 terminals
 - 9/16" mounting stem
- Replaces **Toro 12-8140**



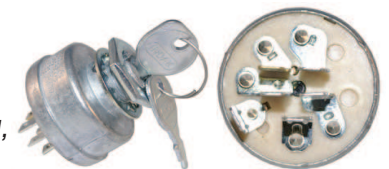
Part# EP30954

- Starter Switch
 - Fits models Groundsmaster 3, 52, 62, 72, 172, 322, 325, 327, 400, 500, RM223D, 450D, 335D and 5100D
 - Battery
 - 3 positions, 6 terminals
 - 9/16" mounting stem
- Replaces **Toro 27-2360**



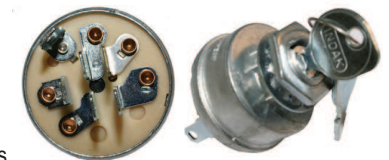
Part # EX11822

- Starter Switch
 - 3 positions
 - 5/8" mounting stem
- Replaces **Toro 103-0206, 104-2541, 88-9830, 109-4736**



Part # EP30950

- Starter Switch
 - Fits model Groundsmaster 310
 - 3 positions, 6 terminals
 - 5/8" mounting stem
 - Includes lockwasher, nut and keys
- Replaces **Toro 83-0020**



Part #P33394

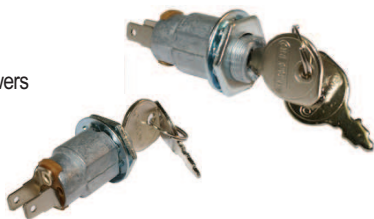
- Starter Switch
 - Magneto
 - 3 positions, 6 terminals
- Replaces **Toro 103991**



TORO continued

Part # P33023

- Stop switch
 - For model S200 and S620 snowblowers
 - Fits 32", 36", 37", 44", 52" mid-size commercial mowers with pull start
- Replaces **Toro 29-5560, 40-5940**



WOODS

Part # EP30401

- PTO Switch
 - 2 positions, 5 terminals
- Replaces **Woods 072262**



Part # EP30508

- PTO Switch
 - 2 positions, 5 terminals
 - 1/2" mounting stem
 - Includes hardware
- Replaces **Woods 70422, 72372**



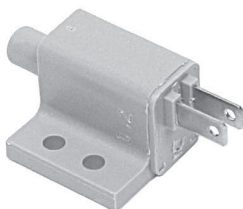
Part # EP30810

- PTO Switch
 - 2 positions, 6 terminals
 - 1/2" mounting stem
 - Includes mounting hardware
- Replaces **Woods 1-72372**



Part # EP30686

- Interlock Switch
 - 2 positions, 4 terminals
 - Normally closed
- Replaces **Woods 071148**



Part # EP30405

- Interlock Switch
 - 2 positions, 2 terminals
 - Normally open
- Replaces **Woods 03657100**



WRIGHT MANUFACTURING

Part # EP30413

- Safety Switch
 - 2 positions, 2 terminals
 - Normally open
- Replaces **Wright 52410002**



WRIGHT MANUFACTURING continued

Part # EP30798

- PTO Switch
 - 2 positions, 8 terminals
- Replaces **Wright 52420003**



Part # P33019

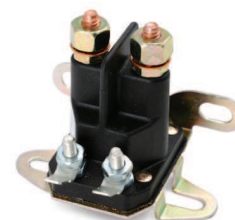
- Seat Switch
 - 2 positions, 2 terminals
 - Normally closed
- Replaces **Wright 5241001**



SOLENOIDS

Part # SE61

- Universal
- 4 post with dual mounting bracket
- Terminal post and sleeve accept 1/4" and 5/16" terminal ends
- External ground includes spade converters



Part # SE60

- Universal
- 3 post with dual mounting bracket
- Terminal post and sleeve accept 1/4" and 5/16" terminal ends
- Internal ground includes spade converter



Part # SE10

- Scag Starter Solenoid
 - 3 pole style, 12 volt
 - 5/16"-24 studs
 - Grounded through base
- Replaces **Scag 48106**



HOUR METERS

Part # HM1

- Digital Tach and Hour Meter
- For all single cylinder and most twin cylinder 4-cycle gasoline engines



Part # HM2

- DC Hour Meter
- DC input
- For commercial equipment
- Voltage range 8-32 VDC



FUSES

Part #	Fuse
P33030	5 AMP
P33031	10 AMP
P33032	15 AMP
P33033	20 AMP
P33034	25 AMP
P33035	30 AMP



LEAD BATTERY TERMINAL

Part # P47689

- Universal 2-screw emergency terminal
- Heavy lead fits all battery cables 6 - 2 gauge



BATTERY CABLES

Part #	Length	Color	Lug Dia.
P47080	8"	Black	3/8" x 3/8"
P47120	12"	Black	3/8" x 3/8"
P47160	16"	Black	3/8" x 3/8"
P47200	20"	Black	3/8" x 3/8"
P47081	8"	Red	3/8" x 3/8"
P47121	12"	Red	1/4" x 3/8"
P47161	16"	Red	1/4" x 3/8"
P47201	20"	Red	1/4" x 3/8"



TEST LIGHT

Part # AC55

- Use on 6 and 12 volt systems.



ECONOMY IGNITION TESTER

Part # T75



VOLTAGE REGULATORS

Part # P33407

- Use on Kawasaki FB460, FC400, FC420, FC540
- 13, 15 & 17 AMP charging system on engines to 18 HP
- Fits John Deere 1300, 160, 165, 170, 172, 175, 176, 180, 185, 186, 240, 242, 245 and others with 15 AMP charging system

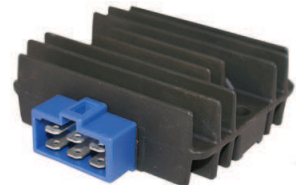
Replaces *Kawasaki 21066-2056, John Deere M70121*



Part # KA2070

- Fits 20 HP & 22 HP water cooled V-twin engines
- 6 terminal, 2 rows of 3

Replaces *Kawasaki 21066-2056, 21066-2070*



Part # KA2071

- Fits commercial engines on walk-behinds with electric clutch, rope start, no battery
- 6 lead wires
- 1-2 pin connector, 1-4 pin connector

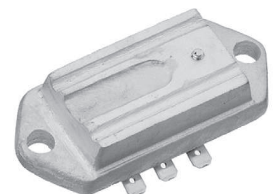
Replaces *Kawasaki 21066-2071*



Part # P33419

- Use on commercial walkbehind mowers with Kohler engine with electric clutch, rope starter and no battery
- Use on CV11, CV12.5, CV13, CV14, CV15 and CV18 model engines

Replaces *Kohler 12-403-01*

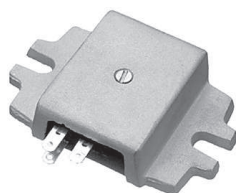


VOLTAGE REGULATORS *continued*

Part # P33400

- Fits 8 - 24 HP engines with 15 AMP alternator
- Kohler engine K181, K241, K301, K321, K482, K532, K582

• "L" pattern with two top terminals, one bottom
Replaces *Kohler 41-403-06, 237335,*
John Deere AM37200

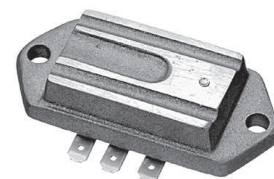


Part # P33401

- Fits 8 - 24 HP engines
- Models M8 - M20, MV16 - MV20, CH5, CH6, CH11 - CH15, CV11 - CV15

- 15 AMP alternator in line terminals
- 3 in a row

Replaces *Kohler 25-755-03*



ELECTRIC PTO CLUTCHES

Part #	ID	Pulley	Belt	Replaces OE
BOBCAT				
P33132	1"	6"	5/8" belt	<i>Bobcat 2722016</i>
P33138	1"	6"	5/8" belt	<i>Bobcat 1226167</i>
PC51	1"	6"	A/B belt	<i>Bobcat 188019</i>
PC47	1-1/8"			<i>Bobcat 272-1137</i>
PC50	1-1/8"	6"	5/8" belt	<i>Bobcat 2188151</i>
BUNTON				
P33132	1"	6"	5/8" belt	<i>Bunton 2519-14</i>
PC47	1-1/8"			<i>Bunton 272-1137</i>
CUB CADET				
P33104	1"	6"	5/8" belt	<i>Cub Cadet 917-17774B</i>
P33113	1-1/8"	5" double pulley	1/2" belt	<i>Cub Cadet WD-C38410</i>
PC52	1-1/8"	7.385	5/8" belt	<i>Cub Cadet 5218-54</i>
DIXIE CHOPPER				
P33118	1"	5-1/4"	5/8" belt	<i>Dixie Chopper 5215-88</i>
ENCORE				
P33185	1"	6"	5/8" belt	<i>Encore 523025</i>
P33127	1-1/8"	6"	5/8" belt	<i>Encore 523370</i>
EXMARK				
P33114	1"	6"	5/8" belt	<i>Exmark 543259</i>
PC53	1"	6"	A/B belt	<i>Exmark 1-611223</i> <i>Exmark 603539</i>
PC51	1"	6"	A/B belt	<i>Exmark 1-551054</i> <i>Exmark 1-543259</i>
EXM1033245		6"	5/8" belt	<i>Exmark 103-324S</i>
PC50	1-1/8"	6"	5/8" belt	<i>Exmark 633099</i>
EXM255527 NEW!	1-1/8"	6"	5/8"	<i>Exmark 103-0665</i> <i>Exmark 1-641300/641300</i> <i>Exmark 1-631732/631732</i>
PC55	1-1/8"	6.313"	5/8" belt	<i>Exmark 103-0281</i> <i>Exmark 103-1364</i>
PC48	1"	6-3/8"	5/8" belt	<i>Exmark 103-0662</i> <i>Exmark 103-0661</i>
EP12517	1"	7-1/8"	5/8" belt	<i>Exmark 109-9276</i> <i>Exmark 109-2916</i>
P33153 NEW!	1"	7-1/8"	5/8" belt	<i>Exmark 109-9276</i>
For Lazer Z HP s/n 720,000 and up (except 27HP)				
P33156 NEW!	1-1/8"	7-1/4"	5/8" belt	<i>Exmark 109-9275</i>
For Lazer Z HP 27 HP serial numbers 720,000 and up				
PC49	1"	7-3/8"	5/8" belt	<i>Exmark 103-1690</i>



ELECTRIC PTO CLUTCHES continued

Part #	ID	Pulley	Belt	Replaces OE
--------	----	--------	------	-------------

EXMARK continued

EP12835 <i>200 lbs. torque</i>	1"	7.2"	5/8" belt	Exmark 109-9275
PC54	1"	7-3/8"		Exmark 103-0690 Exmark 1-653048 Exmark 1-653292
<i>Fits Lazer Z HP series numbers 260,000 and up</i>				
P33175 NEW! PC47	1-1/8" 1-1/8"	7-3/8"	5/8" belt	Exmark 103-6579 Exmark 103-0665 Exmark 164-1300
P12403	1-1/2"	7-11/32"	5/8" belt	Exmark 103-3246
<i>Fits 27 and 30 HP Kohler Lazer Z units</i>				



FERRIS

PC51	1"	6"	A/B belt	Ferris 1521083
PC53	1"	6"	A/B belt	Ferris 15211823
PC50	1-1/8"	6"	5/8" belt	Ferris 1522040
EXM255527 NEW!	1-1/8"	6"	5/8"	Ferris 1521145 Ferris 5021145

GRASSHOPPER

P33117	1"	4-7/8" double pulley	1/2" belt	Grasshopper 388762 Grasshopper 604180
P33121	1-1/8"	4-7/8" double pulley	1/2" belt	Grasshopper 388767 Grasshopper 606242
P33113	1-1/8"	5" double pulley	1/2" belt	Grasshopper 604182 Grasshopper 388766



GRAVELY

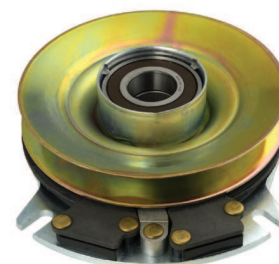
PC56	1-1/8"	6"	5/8" belt	Gravely 9266700 Gravely 09232700
------	--------	----	-----------	---

GREAT DANE

EP12658	1"	6"	5/8" belt	Great Dane GDA10017 Great Dane D38155
<i>Fits Chariot models</i>				
PC50	1-1/8"	6"	5/8" belt	Great Dane D18000 Great Dane 1-543259
PC56	1-1/8"	6"	5/8" belt	Great Dane GDA10122

HUSQVARNA

P33112	1"	5.375"	5/8" belt	Husqvarna 532160899
PC51	1"	6"	A/B belt	Husqvarna 917063
PC50	1-1/8"	6"	5/8" belt	Husqvarna 102306



HUSTLER

P33155 NEW!	1-1/8"	6-5/16"	5/8" belt	Hustler 601311
<i>For Hustler Z, Huster Z XR7, Hustler Mini Z, Hustler ATZ, Hustler Super Z, Hustler Super Z XR7, Hustler Mini Z, Hustler Super Mini Z</i>				
P33188	1-1/8"	6-1/4"	5/8" belt	Hustler 781039

ELECTRIC PTO CLUTCHES continued

Part #	ID	Pulley	Belt	Replaces OE
--------	----	--------	------	-------------

SCAG

PC53	1"	6"	A/B belt	Scag 461074 Scag 48786 Scag 481633
EXM255527 NEW!	1-1/8"	6"	5/8"	Scag 461395 Scag 481530 Scag 461716
PC48	1"	6-3/8"	5/8" belt	Scag 461397

Fits models SSZ and STHM

TORO

P33118	1"	5-1/4"	5/8" belt	Toro 116277
P331281	1"	5-1/4"	5/8" belt	Toro 99-8012
P33189	1-1/8"	4-7/8" double pulley	1/2" belt	Toro 94-4632 Toro 105-1671
P33113	1-1/8"	5" double pulley	1/2" belt	Toro 933160

WARNER

P33132	1"	6"	5/8" belt	Warner 2519-14
PC47	1-1/8"			Warner 5218-65
PC50	1-1/8"	6"	5/8" belt	Warner 5218-5
PC51	1"	6"	A/B belt	Warner 5215-14
P33104	1"	6"	5/8"	Warner 5219-25
P33153 NEW!	1"	7-1/8"	5/8" belt	Warner 5218-205

For Lazer Z HP s/n 720,000 and up (except 27HP)

P33156 NEW!	1-1/8"	7-1/4"	5/8" belt	Warner 5218-210
--------------------	--------	--------	-----------	-----------------

For Lazer Z HP 27 HP serial numbers 720,000 and up

PC52	1-1/8"	7.385	5/8" belt	Warner 5218-54
P33113	1-1/8"	5" double pulley	1/2" belt	Warner 5215-62
P33118	1"	5-1/4"	5/8" belt	Warner 5215-88
PC48	1"	6-3/8"	5/8" belt	Warner 15218-73C Warner 5218-76
PC47	1-1/8"			Warner 5218-65
PC49	1"	7-3/8"	5/8" belt	Warner 5218-80
EXM1033245		6"	5/8" belt	Warner 5218-100
PC54	1"	7-3/8"		Warner 5218-44
PC55	1-1/8"	6.313"	5/8" belt	Warner 5218-73
P33175 NEW!	1-1/8"	7-3/8"	5/8" belt	Warner 5218-202
EP12835	1"	7.2"	5/8" belt	Warner 5218-210
EP12517	1"	7-1/8"	5/8" belt	Warner 5218-205
P33121	1-1/8"	4-7/8" double pulley	1/2" belt	Warner 5218-58 Warner 5218-58
PC56	1-1/8"	6"	5/8" belt	Warner 5218-94
EP12658	1"	6"	5/8" belt	Warner 5219-4
P33188	1-1/8"	6-1/4"	5/8" belt	Warner 5218-110
EP12454	1"	6-1/8"	5/8" belt	Warner 5218-154
P331281	1"	5-1/4"	5/8" belt	Warner 5215-59
P33117	1"	4-7/8" double pulley	1/2" belt	Warner 5218-27
P33190	1"	6"	5/8" belt	Warner 5219-19

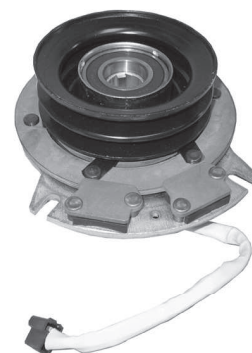
WOODS

P33117	1"	4-7/8" double pulley	1/2" belt	Woods 70903
P33121	1-1/8"	4-7/8" double pulley	1/2" belt	Woods 73558

WRIGHT

P33190	1"	6"	5/8" belt	Wright 71410006
P33154 NEW!	1"	6-5/16"	5/8" belt	Wright 71410001

For large frame Standers to serial number 49704





We have replacement parts available for all engines. Call for information.

Engines are not included in Free Freight Policy

HONDA ENGINES

Part #	Shaft Size	Description
3 HP Horizontal		
GX100QA2	2-19/64" x 5/8"	Tapped 1/2-28 UNF Keyway; Ideal edger replacement
4 HP Horizontal		
GX120QA2		Ideal edger replacement
GX120HX2		Oil Alert 6:1 gear reduction; Spray pumps
5 HP & 5.5 HP Horizontal		
GX160QX2	2-7/16" x 3/4"	Oil Alert, Recoil start; Includes fuel tank and muffler
GX160TX2	2-7/16" x 5/8"	Threaded; Ideal water pump replacement
GX160HX2	2-7/16" x 3/4"	6:1 Reduction, Oil Alert, Recoil Start; Includes fuel tank and muffler
GX160QXE2	2-7/16" x 3/4" Tapped 5/16-24 Unf. Shaft	Electric start
GX160RH2	2-3/32" x 7/8"	2:1 reduction with clutch; Ideal Go Kart replacement
6.5 HP Horizontal		
GX200QX2	2-7/16" x 3/4"	Oil Alert; Ideal Power Rake/Washer Replacement
GX200HX2	2-3/64" x 3/4"	6:1 reduction; Ideal mortar/cement mixer replacement
8 HP Horizontal		
GX240QA	3-1/64" x 1"	Oil alert, recoil start; Includes fuel tank and muffler
GX240PA2	3-1/2" x 1" threaded	Oil alert; Ideal pump replacement
GX240HA	3-31/64" x 1"	6:1 reduction, oil alert, recoil start; Includes fuel tank and muffler
9 HP Horizontal		
GX270QA2	3-31/64" x 1"	Oil alert; Ideal blower replacement
GX270PA2	3-1/2" x 1"	Ideal pump replacement
GX270HA2	3-15/64" x 1" keyed	6:1 gear reduction, oil alert; Ideal mortar/cement mixer replacement
GX270RA2	2-3/64" x 7/8"	
13 HP Horizontal		
GX390QA2	1"	Oil alert, recoil start; General replacement
GX390QAE2	1"	Oil alert, electric start (3 Amp)
18 HP Horizontal		
GX610QZE		18 HP, 3 Amp, Oil Alert, SWC Box and lever; Ideal walk-behind; Muffler not included
GX610TXF2	1-1/8"	18 HP, 20 Amp, Cannister A/C; No muffler

Honda Repair Manuals

Part #	Model
GX120M	GX120 4 HP Horizontal
GX160M	GX160 5.5 HP Horizontal
GX240M	GX240 8.5 HP Horizontal
GXV390M	GX390 13 HP Vertical
GXV140M	GX140 5 HP Vertical

KAWASAKI "KAI" ENGINES

EPA Engines to Replace FB460 & FC420 Engines

Part #	Shaft Size	Replaces OE #	Description
13 HP Vertical (Replaces FB460 12.5 HP)			
FH381V-BS21-S	1" x 80mm	FB460V	Standard recoil start w/6 Amp charging for clutches
FH381V-AS20-S	1" x 80mm	FB460V	Standard electric start
15 HP Vertical (Replaces FC420 14 HP)			
FH430V-CS21-S	1" x 80mm	FC-420-14	Standard recoil start w/6 Amp charging for clutch
FH430V-AS20-S	1" x 80mm	FH451V-S01	Standard electric start
16 HP Vertical			
FH480V-S20	1" x 80mm		Electric starter KAI
FH480V-S21	1" x 80mm		Recoil starter KAI with clutch coil
17 HP Vertical			
FH541V-CS21-S	1" x 80mm	FH500V-S02/03	Standard recoil start w/6 Amp charging
FH541V-CS20-S	1" x 80mm	FH500V-S01	Standard electric start
19 HP Vertical			
FH580V-BS21-S	1" x 80mm		Recoil start w/coil
FH580V-AS20-S	1" x 80mm		Electric start, comes with muffler
28 HP Horizontal			
FH770D-S01S	1-1/8" x 100mm		Electronic starter, front muffler; 13 Amp coil separate choke and throttle

KAWASAKI VERTICAL ENGINES

Part #	Shaft Size	Description
6 HP Vertical		
FJ180V	7/8" x 80mm	Recoil start, includes fuel tank and oil filter
FJ180V-AS15-S	25mm x 80mm	Recoil without tank; Replacement for Toro/Exmark
13 HP Vertical		
FH381V-BSS21-S	1" Straight	Recoil start, includes muffler; 1/4" straight keyway, with coil; General replacement
15 HP Vertical		
FH430V-CS21-S	1"	Recoil start, 13 Amp coil, includes muffler; Charging system for clutches
FH430V-AS20-S	1"	Electric start, includes muffler; General replacement
17 HP Vertical		
FH500V-BS02-S	1"	Vertical, 13 Amp, recoil start, includes muffler; 1/4" straight keyway
FH500V-BS01-S	1"	Vertical, 13 Amp, electric start, includes muffler; 1/4" straight keyway
19 HP Vertical		
FH601V-DS01-S	1-1/8"	13 Amp, electric start, includes muffler
FH601V-FS09-S	1"	13 Amp, electric start, includes muffler
21 HP Vertical		
FH641V-AS01-S	1-1/8"	13 Amp, electric start, includes muffler
FH641V-ES05-S	1"	13 Amp, electric start, includes muffler
23 HP Vertical		
FH680V-DS01-S	1-1/8"	13 Amp, air cooled, electric start, muffler not included
FH680V-FS06-S	1"	13 Amp, electric start, includes muffler; General replacement
25 HP Vertical		
FH721V-CS01-S	1-1/8"	13 Amp, electric start, includes muffler
FH721V-DS13-S	1"	13 Amp, electric start, muffler not included
26 HP Vertical		
FD731V-S00	1-1/8" x 100mm	20 Amp coil, includes cannister air filter, muffler not included
FD731V-S01	1-1/8" x 80mm	20 Amp coil, includes cannister air filter, muffler not included

Kawasaki Engine Repair Manuals

Part #	Model
99924-2020-02	FC-150V 5 HP
99924-2011-01	FV-460V, 12.5 HP
99924-2018-02	FC290-V, FC-400AV, FC-401V, FC-420V 14 HP, FC-540V 17 HP
99924-2078-01	FH-451V 15 HP, FH500V 17 HP, F-531V, FH-541V 17 HP, FH-580V 19 HP, FH601V 19 HP, FH-641V 21 HP, FH680V 23 HP, FH-721V 25 HP

KAWASAKI HORIZONTAL ENGINES

Part #	Shaft Size	Description
18 HP Horizontal FD620D-DS13-01	1-1/8"	20 Amp coil, muffler not included
22 HP Horizontal FD661D-BS03-01	1-1/8"	20 Amp system, Exmark specs, muffler and radiator not included
23 HP Horizontal FD671D-AS00	1-1/8"	20 Amp coil, includes muffler
FH680D-AS08	1-1/8"	13 Amp coil, muffler not included
25 HP Horizontal FH721D-BS01-S	1-1/8"	13 Amp coil, includes muffler
27 HP Horizontal FD720D-S02	1-1/8"	Liquid cooled, 20 Amp coil, muffler not included
FD750D-AS03-01	1-1/8"	Exmark specs, muffler, air filter and radiator not included

KAWASAKI OEM REPLACEMENT ENGINES

Part #	Shaft	Description
Bobcat/Ransomes FH680V-BS27-S	1-1/8"	13 Amp coil, electric start, muffler not included; 23 HP vertical
FH721V-BS24-S	1-1/8"	13 Amp coil, electric start, muffler not included; 25 HP vertical
Exmark FD661D-BS03-01	1-1/8"	20 Amp coil, muffler and radiator not included; 22 HP horizontal
FH721D-BS01-S	1-1/8"	13 Amp coil, includes standard muffler; 25 HP horizontal
FH680D-AS08	1-1/8"	13 Amp coil, muffler not included; 23 HP horizontal
FD750D-AS03-01	1-1/8"	30 Amp coil; Muffler, radiator, air cleaner not included; 27 HP horizontal
Ferris FH721V-S11	1-1/8"	13 Amp coil; includes muffler
Great Dane FH451V-BS02-S	1"	Charge coil, includes muffler; 15 HP vertical
FH680V-FS06-S	1"	13 Amp coil; electric start; includes muffler; 23 HP vertical
FH721V-DS13S	1"	13 Amp coil; electric start; includes muffler; 25 HP vertical
Scag FD661D-S05	1-1/8"	20 Amp coil; includes muffler
FD671D-S01	1-1/8"	20 Amp coil; includes muffler
FD750D-AS02	1-1/8"	20 Amp coil; muffler not included; 27 HP horizontal
FH641V-AS27-S	1-1/8"	13 Amp coil; muffler not included; 21 HP vertical
Toro FD661D-BS0301-01	1-1/8"	20 Amp coil; muffler and radiator not included; 22 HP horizontal
FD750D-AS03-01	1-1/8"	30 Amp coil; muffler not included; 27 HP horizontal
FH680D-AS08	1-1/8"	13 Amp coil; muffler not included; 23 HP horizontal
FH680V-FS06-S	1"	13 Amp coil; electric start, muffler not included; 23 HP vertical
FH721D-BS01-S	1-1/8"	13 Amp coil; includes standard muffler; 25 HP horizontal



KAWASAKI ENGINE APPLICATIONS

Kawasaki #	HP	Shaft Replacement	Charging Size	System	Starter	Muffler
BOBCAT						
FH381V-CS21S	13	Walk-behind	1" x 80mm	Not included	Recoil	Standard
FH541V-CS21S	17		1" x 80mm	Not included	Recoil	Standard
FH680V-DS27S	23		1-1/8" x 100mm	13 amp	Electric	Not included
FH721V-DS24S	25	ZTR	1-1/8" x 100mm	13 amp	Electric	Not included
FH721V-ES01S	25	ZTR	1-1/8" x 100mm	13 amp	Electric	Standard
BUNTON						
FH680V-DS27S	23	ZTR	1-1/8" x 100mm	13 amp	Electric	Not included
FH680V-FS01S	23	ZTR	1-1/8" x 100mm	13 amp	Electric	Standard
BUSH HOG						
FH721V-DS24S	25	ZTR	1-1/8" x 100mm	13 amp	Electric	Not included
FH721V-ES01S	25	ZTR	1-1/8" x 100mm	13 amp	Electric	Standard
CUB CADET						
FH680V-DS27S	23	Tank ZTR	1-1/8" x 100mm	13 amp	Electric	Not included
FH680V-FS01	23	Tank	1-1/8" x 100mm	13 amp	Electric	Standard
FH721V-DS24S	25	Tank	1-1/8" x 100mm	13 amp	Electric	Not included
FH721V-ES01S	25	Tank	1-1/8" x 100mm	13 amp	Electric	Standard
EVERRIDE						
FH680V-DS27S	23	ZTR	1-1/8" x 100mm	13 amp	Electric	Not included
FH721V-DS24S	25		1-1/8" x 100mm	13 amp	Electric	Not included
EXCEL/HUSTLER						
FH430V-CS21S	15	34" walk-behind and Super Surfer	1" x 80mm	Not included	Recoil	Standard
FH541V-CS205	17	Short Cut ZTR	1" x 80mm	13 amp	Electric	Standard
FH541V-CS21S	17	48" walk-behind Trim Star	1" x 80mm	Not included	Recoil	Standard
FH680V-DS27S	23	Super Z and Short Cut ZTR	1-1/8" x 100mm	13 amp	Electric	Not included
FH680V-FS01S	23	Walk-behind	1-1/8" x 100mm	13 amp	Electric	Standard
FH721V-DS24S	25	Super Z	1-1/8" x 100mm	13 amp	Electric	Not included
FH721V-ES01S	25	Super Z	1-1/8" x 100mm	13 amp	Electric	Standard
EXMARK						
FJ180V-CS09S	6	Metro 21 BBC and M216KASPC	Special size, Tapered, 50mm	Not included	Recoil	Low-tone w/guard
FJ180V-CS10S	6	Metro 21 Zone Start M216KA and M216KASP	Special Size 25mm x 80mm	Not included	Recoil	Front discharge
FH381V-C21S	13	Walk-behind	1" x 80mm	Not included	Recoil	Standard
FH30V-CS21S	15	Metro, Viking and Turf Tracer HP	1" x 80mm	Not included	Recoil	Standard
FH541V-CS20S	17	Turf Tracer	1" x 80mm	13 amp	Electric	Standard
FH541V-CS21S	17	Walk-behind	1" x 80mm	Not included	Recoil	Standard
FH680V-DS28S	23	Turf Tracer and Lazer Z	1-1/8" x 100mm	13 amp	Electric	Not included
FH680V-FS06S	23	Turf Tracer and Lazer HP	1" x 80mm	13 amp	Electric	Included
FERRIS						
FH381V-CS21S	13	Walk-behind	1" x 80mm	Not included	Recoil	Standard
FH430V-CS21S	15	Belt drive walk-behind	1" x 80mm	Not included	Recoil	Standard
FH541V-CS21S	17	Dual belt drive	1" x 80mm	Not included	Recoil	Standard
FH680V-DS27	23	Pro ZTR and Pro Cut	1-1/8" x 100mm	13 amp	Electric	Not included
FH680V-FS01S	23	ZTR	1-1/8" x 100mm	13 amp	Electric	Standard
FH721V-DS24S	25	ZTR	1-1/8" x 100mm	13 amp	Electric	Not included
GREAT DANE						
FH541V-CS20S	17	Chariot Jr. and Super Surfer	1" x 80mm	13 amp	Electric	Standard
FH541V-CS21S	17	Scamper	1" x 80mm	Not included	Recoil	Standard
FH680V-DS28S	23	Chariot Jr.	1-1/8" x 100mm	13 amp	Electric	Not included
FH680V-FS06S	23	Chariot Jr. and Super Surfer	1" x 80mm	13 amp	Electric	Included
HUSQVARNA						
FH381V-CS21S	13	Walk-behind	1" x 80mm	Not included	Recoil	Standard
FH430V-CS21S	15	iZT walk-behind and gear drive walk-behind	1" x 80mm	Not included	Recoil	Standard
FH541V-CS20S	17	Consumer 48" Z	1" x 80mm	13 amp	Electric	Standard
FH680V-DS27S	23	XP ZTR	1-1/8" x 100mm	13 amp	Electric	Not included
FH680V-DS28S	23	ZTR	1-1/8" x 100mm	13 amp	Electric	Not included
FH680V-FS01S	23	XP	1-1/8" x 100mm	13 amp	Electric	Standard
FH721V-DS24S	25	ZTR HP	1-1/8" x 100mm	13 amp	Electric	Not included

Kawasaki #	HP	Shaft Replacement	Charging Size	System	Starter	Muffler
SCAG						
FH430V-CS21S	15	SWZ hydro	1" x 80mm	Not included	Recoil	Standard
FH541V-CS21S	17	Belt and hydro drive walk-behind	1" x 80mm	Not included	Recoil	Standard
FH580V-CS21S	19	SWZ and SWU walk-behind	1" x 80mm	Not included	Recoil	Standard
FD750D-CS00S	27	Turf Tiger	1-1/8" x 100mm	20 amp	Electric	Standard, low tone
TORO						
FJ180V-CS09S	6	Self-propel 22177	Special size	Not included	Recoil	Low-tone w/guard
FJ180V-CS10S	6	HP22175 and SP22176	Special size	Not included	Recoil	Front discharge
FH381V-CS21S	13	T-bar 36" gear drive	1" x 80mm	Not included	Recoil	Standard
FH430V-CS21S	15	44" hydro and gear, drive walk-behind	1" x 80mm	Not included	Recoil	Standard
FH541V-CS20S	17	Time Cutter ZX 525	1" x 80mm	13 amp	Electric	Standard
FH541V-CS21S	17	Pistol grip and T-bar hydro-gear walk-behind	1" x 80mm	Not included	Recoil	Standard
FH680V-DS28S	23	ZTR	1-1/8" x 100mm	13 amp	Electric	Not included
FH680V-FS06S	23	ZTR	1" x 80mm	13 amp	Electric	Included
WALKER						
FH430V-CS21S	15	Walk-behind	1" x 80mm	Not included	Recoil	Standard
WRIGHT						
FH541V-CS20S	17	ZTR	1" x 80mm	13 amp	Electric	Standard
FH541V-CS21S	17	Stander	1" x 80mm	Not included	Recoil	Standard

KOHLER VERTICAL ENGINES

Part #	Shaft Size	Description
15 HP Vertical		
PA-45182	1" x 3-1/8"	Command; recoil start; 15 Amp system for clutches
PA-41583	1" x 3-1/8"	Command; remote oil filter, all walk-behind mowers
PA-41542	1" x 3-1/8"	Recoil start; replacement for Exmark
18 HP Vertical		
PA-61557		Command; muffler not included; electric start; Exmark replacement
PA-27512	1" x 3.17	Recoil start; universal replacement
20 HP Vertical		
PA-65514	1" x 3-29/32	Command; Extension exhaust; Scag replacement
PA-65541	1-1/8" x 3-1/4"	Command; Dixie Chopper replacement
PA-57511	5/16" x 1-1/8"	Magnum; Exhaust deflected rear; Scag replacement
PX-57515	1-1/8" x 7-9/32"	Magnum; Scag replacement
PX-57506	1-1/8" x 3-25/32"	Magnum; Dixie Chopper replacement
22 HP Vertical Command		
PA-75523	1" x 3-29/32"	Scag replacement
PA-75885	1" x 3-29/32"	Scag replacement
PA-75586	1-1/8" x 3-29/32"	Bobcat ZTR replacement
23 HP Vertical Command		
PA-75523	1" x 3-29/32"	Scag replacement
PA-75524	1" x 3.56"	Exmark Turf Ranger/Turf Tracer and Toro replacement
PA-75513	1-1/8" x 3-7/64"	Dixie Chopper replacement
PA-75565	1" x 4"	Great Dane replacement
25 HP Vertical Command		
PA-CV730-0031	1-1/8" x 3-29/32"	Bobcat ZTR replacement
PA-CV730-0032	3-1/4"	Dixie Chopper replacement
PA-CV730-0035	4.375"	Muffler not included; Gravely replacement
27 HP Vertical		
PA-CV730-0008	1-1/8" x 3.31"	Muffler not included; Dixie Chopper replacement

KOHLER VERTICAL ENGINES

Kohler Repair Manuals

Part #	Description
TP-2428C	Command Horizontal 18 HP, 20 HP, 22 HP, 25 HP
TP-2450C	Command Vertical 17 HP to 25 HP
TP-2339C	Command Vertical 11 HP, 12.5 HP, 14 HP, 15 HP
TP-2203A	Magnum Horizontal
TP-2289A	Magnum Vertical

KOHLER HORIZONTAL ENGINES

Part #	Shaft Size	Description
16 HP Horizontal		
PX-711562	1-1/2" x 1-25/32"	Magnum
PX-711533	1" x 1-7/16"	Magnum
17 HP Horizontal		
PX-24302	1-1/8" x 2-51/64"	K Series, electric start
PX-24324		Command
18 HP Horizontal		
PA-62623		Command, muffler not included
PA-62500	1-1/8" x 4"	Muffler not included
23 HP Horizontal		
PA-76513		Command
PA-76561		Command; muffler not included
PA-76510		Command
25 HP & 26 HP Horizontal		
PA-CH730-0046	1-7/16" x 4-29/64"	Electric start
PA-CH730-0003	1-1/8" x 2-45/64"	Exmark Lazer Z replacement
PA-CH730-0120		Command
PA-730-0066		Command
PA-CH730-0137	1-1/8" x 2-45/64"	
PA-CH730-0007		Command; muffler not included
PA-CH730-0073		Toro; muffler not included
PA-78518		Command
PA-78522		Command; muffler not included
27 HP Horizontal		
PA-CH740-0045	1.125" x 2.79"	Includes muffler
PA-CH740-0021	1.125" x 3.34"	Includes muffler
PA-CH740-0037	1.125" x 3.35"	Includes muffler
20 HP Horizontal		
PA-64501	1-7/16" x 4-29/64"	Command
PA-64538	1-1/8" x 7-9/32"	Command; right side exhaust, muffler not included
PA-64510	1-7/16" x 4-29/64"	Command
PA-64660	1-1/8" x 7-9/32"	Command; left side exhaust, muffler not included
PX-49544	1-1/8" x 5-5/16"	Magnum
PA-64531		Command; starter, side muffler

